

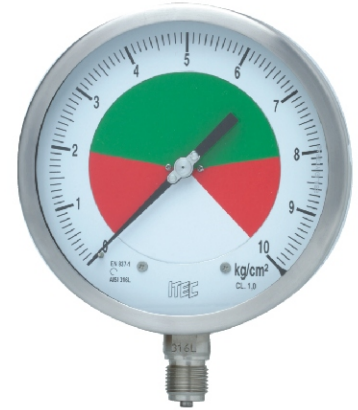
FEATURES

- Socket-case, direct welded CE marking
- External zero adjustment
- External dead band adjustment

APPLICATION

- Liquid & gaseous mediums
- Corrosive environments
- Oil & Gas applications
- Chemical & Petrochemical

Gauge With Externally Rotatable Dial



STANDARD PARAMETERS

Accuracy	: CL 1.0
Ambient temperature	: -40...+65°C (without dampening liquid)
	: -20...+65°C (with dampening liquid)
Service temperature	: 300°C max.
Pressure limits	: Steady pressure up to FS value
	: Fluctuating pressure up to 90% of FS value
	: Short time 1.3 x FS value for range up to 100 bar
	: Short time 1.15 x FS value for range above 100 bar
Weld joints	: TIG argon arc welding

MATERIAL OF CONSTRUCTION

Sensing element	: Bourdon Tube (<100 bar : C - type , >100 bar : Helical)
Case & Ring material	: AISI 304 SS (Bayonet type)
Bourdon tube & Shank	: AISI 316L SS (Shank welded directly to case)
Movement mechanism	: AISI 304 SS
Dial	: Aluminum, black graduation on white background
Safety dead band adjustment	: ± 25° max.
Pointer	: Micro-zero adjustable, aluminum, black powder coated
Gaskets, Blow off disc & filling plug	: Neoprene / NBR
Window	: Sheet glass

STANDARD SPECIFICATIONS

Dial size	: DN100 / DN150
Range	: -1...2,100 bar
Mounting pattern	: Direct, Bottom connection
Process connection	: ½" NPT (M) / ½" BSP (M)
Ingress protection	: IP 65
Execution	: Dry

STANDARD SPECIFICATIONS : DAMPENING LIQUID FILLED, GLYCERIN

Window	: Safety glass
Dampening liquid	: Glycerin 99.7% [Service temperature up to 65°C]

TEMPERATURE EFFECT

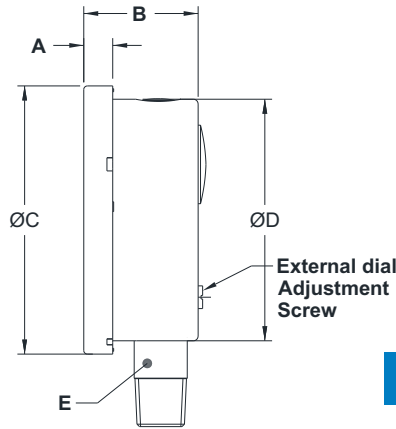
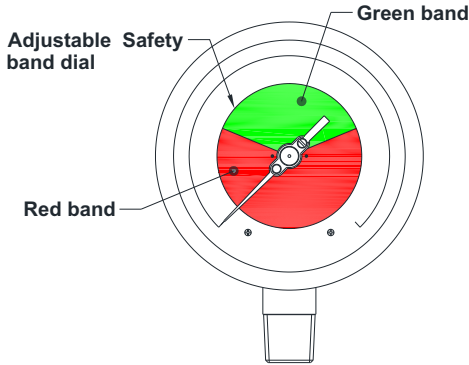
When temperature of the measuring system deviates from reference temperature (+20°C) max error ±0.4% / 10K of true scale value.

REFERENCE

EN 837-1

DIMENSIONAL DRAWING

Type L2



DN	A	B	ØC	ØD	E	Weight (grams)
100	12	48	111	100	SQ.22	506
150	15	48	161	149	SQ.22	900

All dimensions are in mm.

ORDERING CODES

1. DIAL SIZE

- 04 100 mm / 4"
- 06 150 mm / 6"

04

2. RANGE

- XXX Refer "Range Table"

XXX

3. MOUNTING PATTERN

- B0 Direct, Bottom connection

B0

4. PROCESS CONNECTION

- 14B 1/2" BSP (M)
- 14M M20 X 1.5 mm (M)
- 14N 1/2" NPT (M)

14N

5. INGRESS PROTECTION

- ER IP 65
- ES IP 66
- ET IP 67

ER

6. EXECUTION

- EA Dry
- EB Dry but fillable
- EG Dampening liquid filled, glycerine
- EH Dampening liquid filled, silicon oil²

EA

7. OTHER OPTIONS

- BA Case & Ring in AISI 316 SS (B0)
- EM Dampening screw, Monel
- EN Dampening screw, AISI 316 SS
- EX Internal overload stop
- EY Internal vacuum stop
- EZ Pointer stop on dial
- GB Plexi glass
- GC Shatterproof safety glass
- GL AISI 316 SS movement
- GM Dampened movement
- MN Monel wetted parts
- RA Rubber parts, Viton
- RW Vent plug, ON-OFF type
- TA 5 - point calibration certificate
- TC Material test certificate 3.1
- TE CE certificate
- TM Material test certificate 2.2
- TN Tested to NACE standards
- TO Certification for Oxygen service
- XF SS tag plate, AISI 304 SS
- XG SS tag plate, AISI 316 SS
- XR Custom designed dial
- XT Dial tag marking

XX

Ordering Example : P802-04-XXX-B0-14N-ER-EA

NOTES

1. For other connections, please contact factory.
2. Rubber parts shall be in Viton.