

The type of protection Ex p allows to install **complex industrial control units directly in hazardous area**. Exepd supplies ATEX conform solution in accordance to the valid standards. To find the best way with our customers for realization, we provide three different possibilities:

- 1. Turn Key:** In this case we supply the complete cabinet with all the needed build-in parts, Ex p controller, power relays and wiring in accordance with the customers diagram.
- 2. Together:** Here, Exepd take care about the explosion protection, means cabinet, controller and power relays. The build-in parts will be delivered by our customer. The complete device will be inspected in our workshop.
- 3. On-site:** For this case Exepd supplies the single parts which are necessary for the explosion protection like the cabinet, controller and power relay as single units. The customer build the complete cabinet. Our specialists will come to do the final inspection on-site at customers workshop.

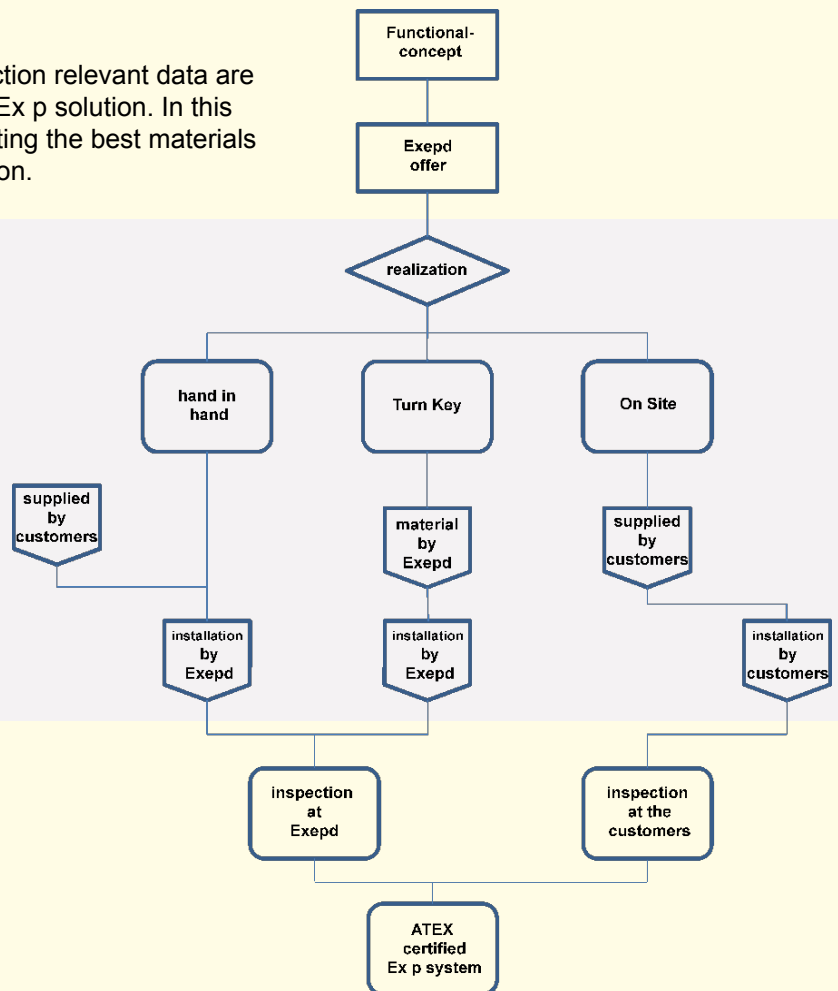


Concept:

Your wiring diagram and the explosion protection relevant data are enough for Exepd to provide an offer for the Ex p solution. In this phase our specialists will assist you by selecting the best materials to fulfil the demands on the place of installation.

Realization:

In accordance with the offer we build out of your demands a product. At this stage we select the best concept, with proportional or digital valve, volume integration or time depending system.



Plan of concept:

Based on the Exepd EC Type Certificate **TPS 07 ATEX 61951 2X** or in accordance with the requirements for zone 2 Ex pz cabinets, **we adjust** the complete system and put it **into operation**.